



# Train Egress & Evacuation

**Nick Swift HSBC Rail**

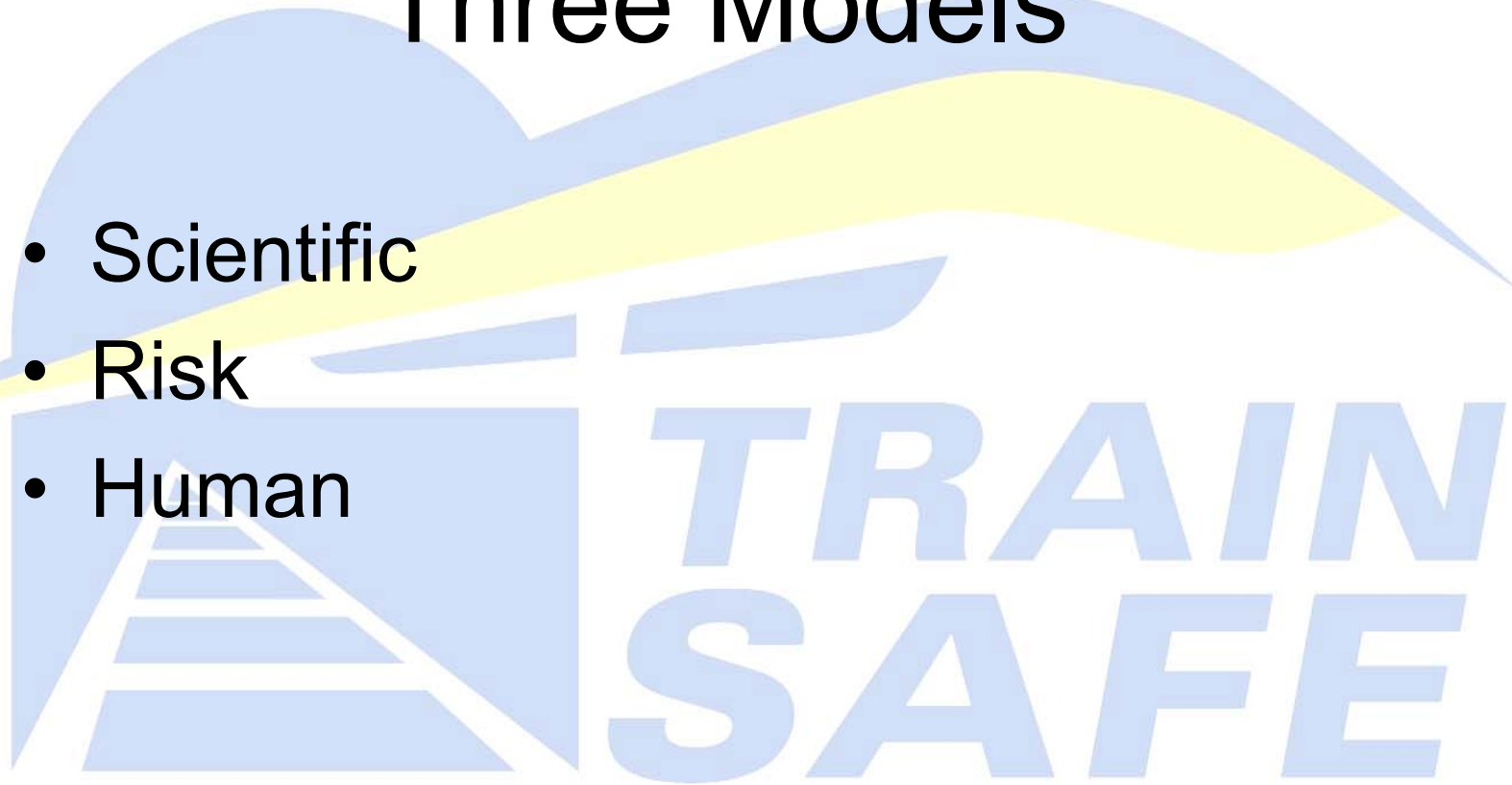
**TRAIN  
SAFE**





# Three Models

- Scientific
- Risk
- Human





# Scientific Model

- We “Engineer” environment
- Egress is good
- Measure & Test
- Rational Passengers





# Risk Model

- We “Engineer” environment
- Egress not good - Safer on train
- Rational Passengers



# Human Model

- Chaotic Environment
- We provide tools
- Decision delegated - trust the passenger



# Common Standards

- Improves public safety?
- Standards vs Innovation?
- Agreed model?

